

Joel Krott, music director



WEST JERSEY
CHAMBER MUSIC
SOCIETY

J.S. BACH: HERALDING CANTATAS

SUNDAY,
MAY 18
AT 7:30 PM

First Presbyterian
Church of
Moorestown

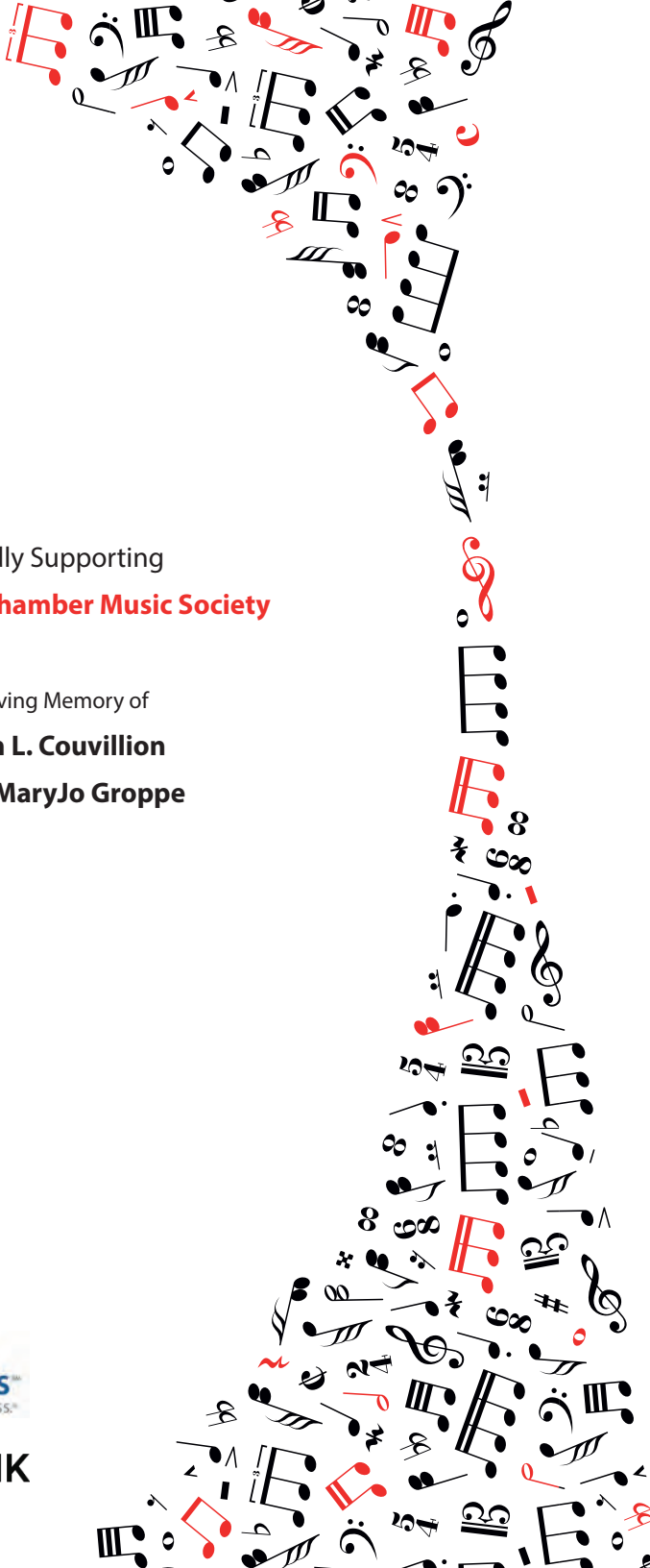
WEST JERSEY
CHAMBER
ORCHESTRA

WEST JERSEY
CHAMBER
CHORALE

FIRST
PRESBYTERIAN
ADULT CHOIR

2024-2025 SEASON

24
25

A large, stylized graphic of musical notes and symbols, including treble clefs, eighth notes, and various musical notations, arranged in a curved, flowing path that starts from the top right and extends towards the bottom left, framing the central text.

Proudly Supporting
West Jersey Chamber Music Society

In Loving Memory of
Helen L. Couvillion
Carl & MaryJo Groppe



West Jersey Chamber Music Society *is dedicated to*

- Producing professional and affordable classical music concerts of the highest musical quality.
 - Developing and nurturing a diverse audience of music lovers, those new to music, families and young people.
 - Enhancing the quality of life in our region through the uplifting and inspiring power of music.
-

Board of Directors

Officers

Bill Mueller, President
Mike Devine, Vice President
Gerry Dinon, Treasurer
Carl Winter, Secretary

Music Director

Joel Krott

Executive Director

Joann Nawrocki

Board of Trustees

Brett Couvillion
Mike Devine
Gerry Dinon
Dr. Leonard Fitts
Frank Giordano
Mark Huddell
Joel Krott
Cecelia Lane
William Mueller

Joann Nawrocki
Madelon Paglee
Harris Ransom
Patty Roman
David Scheibe
Victoria Sewell
J. Elaine Shelden
Carl Winter



*Funding has been made possible by funds from the
Burlington County Commissioners, a partner of
the New Jersey State Council on the Arts.*

ZOOK DINON^{PA}

CPAS & CONSULTANTS

www.zdcpas.com

856-234-0900

*"Music expresses that which cannot be said
and on which it is impossible to be silent."*

Victor Hugo (1802-1885)

Best Wishes

To

West Jersey Chamber Music Society

224 Strawbridge Drive, Suite 303

Moorestown, NJ 08057



AARDVARK GUTTERING, LLC

Commercial & Residential

Bartley R. Williams

Owner

Lic.#13VH01432800

aardvark6@gmail.com

www.aardvark-gutters.com

Phone: 856-874-0706

Cell: 609-617-6391

P.O. Box 4704

Cherry Hill, NJ 08034



ASL Transportation Group

P.O. Box 560

Williamstown, NJ 08094

(856) 875-1200

**Proudly supports
West Jersey Chamber Music
Society**





Joel Krott

Music Director

Music Director, Joel Krott, has been present in Moorestown since 1970.

Having earned a Summa Cum Laude music performance degree in organ from Philadelphia Musical Academy, under the tutelage of Robert Elmore, he immediately was appointed Organist/Director at First Methodist Church in Moorestown. At that time, he also served as Assistant Organist at Tenth Presbyterian Church in Philadelphia.

In February of 1972, he was appointed Organist/Director at First Presbyterian Church, Moorestown, where

he continued to build on the already well established music ministry of the church.

Musical education continued in two summers at the International Organ Academy at Haarlem, Holland where he studied under Anthon Heiller and Marie-Claire Alain. Organ studies continued for five summers in Denmark with Grethe Krogh of the Royal Danish Conservatory. Through the summer Bach Festivals at the University of Oregon, Mr. Krott received extensive conducting instruction under Helmuth Rilling.

continued on next page>>>



Serva Health

is pleased to support
the West Jersey
Chamber Music
Society.



Serva Health
personal. intelligent. solutions.

Victoria Sewell

Sales Associate

A proud supporter of the West Jersey Chamber Music Society



COLDWELL BANKER
REALTY

Cell: 609-504-5449 • VSewell@cbpref.com

27. East Main Street, Moorestown, New Jersey 08057

In the earlier part Mr. Krott's tenure at First Presbyterian, he presented many concerts abroad and the choral program grew in size and depth. In seeking to provide fine orchestral accompaniments for the choirs, he established a small chamber orchestra which, after three years, became incorporated and eventually developed into West Jersey Chamber Music Society.

The music society and Presbyterian Church are in a symbiotic relationship: the church providing a venue for choral, chamber, and orchestral concerts: the music society providing splendid accompaniments for the church choirs of all ages. Unique in this situation is the opportunity for young people down to second graders, to sing with a professional orchestra. Teen choirs, over the years have sung many major works including all the brief Masses of Mozart.

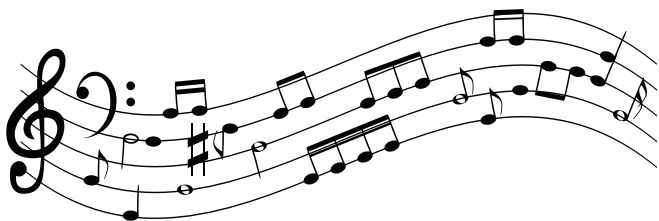
In this time, through both

the Chamber Music Society and Church, Joel Krott has presented at least two-hundred concerts including major choral works, organ recitals, symphonic concerts, chamber music recitals, and youth choir concerts.

In the church context, he strengthened the program by overseeing the installation of a new organ in 1991 built by Marcussen of Denmark – one of only four in North America.

Also of note, he led four international concert tours for the youth choirs in Denmark, Sweden, and Germany. The aspect of international tours led by Mr. Krott are preserved in a full-length documentary: "Heavenly Voices."

Joel Krott lives in Cinnaminson and is the proud husband of Sandra, the proud father of Carl Krott and Melissa McNab, and proud grandfather of Taylor, Andrew, and Alex Krott and of Sawyer, Emma, and Fischer McNab.



Concert Program

West Jersey Chamber Music Society

Joel Krott, Music Director

J.S. Bach

Heralding Cantatas

Sunday, May 18 at 7:30pm

West Jersey Chamber Chorale and Orchestra

Wachet auf, ruft uns die Stimme

J.S.Bach BWV 140

Laura Berman, Soprano

Ben Berman, Tenor John Miles, Bass

Chorus: "Wachet auf ruft uns die Stimme"

Tenor Recitative: "Er kommt, er kommt"

Soprano-Bass aria duet: "Wann kommst du, mein Heil?"

Choral: "Zion hört die Wächter singen"

Bass Recitative: "So geh' herein zu mir"

Soprano-Bass aria duet: "Mein Freund ist mein"

Choral: "Gloria sei dir gesungen"

Singet dem Herrn ein neues Lied

J.S.Bach BWV 190

Frank Mitchell, Bass Sam Day, Tenor Amanda Schkeeper, Alto

Michael Martin, Tenor Erik Potteiger, Bass

Chorus: "Singet dem Herr ein neues Lied"

Chorale with Alto, Tenor, Bass recitatives: "Herr Gott, dich loben wir"

Alto Aria: "Lobe, Zion, deinen Gott."

Bass Recitative: "Es wünsche sich die Welt"anger warten"

Tenor-Bass aria duet: "Jesus soll mein alles sein"

Tenor Recitative: "Nun, Jesus gebe"

Chorale: "Less uns das Jahr vollbringen"

Intermission

Erschallet, ihr Lieder

J.S.Bach BWV 172

Jina Jang, Soprano Joanna Gates, Alto

Ben Berman, Tenor Frank Mitchell, Bass

Chorus: "Erschallet, ihr Lieder"

Bass Recitative: "Wer mich liebet"

Bass Aria: "Heiligste Dreieinigkeit"

Tenor Aria: "O Seelenparadies"

Soprano-Alto aria duet: "Komm, lass mich länger warten"

Chorale: "Von Gott kömmt mir ein Freudenschein"

Chorus: "Erschallet, ihr Lieder"

Choirs and Orchestra

First Presbyterian Church Adult Choir

SOPRANO

Rachel Ferguson, Natalia Figueroa, Cheryl Gaskill, Shannon King, Mary Lawlor, Elizabeth Litten, Leah Rykaczewski, Lily Rykaczewski, Abigail Stoyer, Bobbi Voglesong, Jennifer Wait, Janet Wilkie

ALTO

Barbara Adams, Carole Clarke, Cecelia Lane, Linda Lockart, Catherine Markel, Karen Molloy, Alivia Nawrocki, Jenny Revucky, Amanda Schkeeper, Arlita Winston, Jessica Zorn

TENOR

Peter Bishop, Andrew Cates, Sam Day, Amit Joshi, Jeremy Reid

BASS

Ivan Denissov, Mark Huddell, Frank Manion, Frank Mitchell, Brian Perkowski, Trevor Shell

REHEARSAL ACCOMPANIST

Kathy Gunsallus

SECTIONAL LEADERS

Kathy Gunsallus, Karen Molloy, Sam Day

West Jersey Chamber Chorale

SOPRANO

Laura Berman, Abigail Chapman, Jina Jang

ALTO

Joanna Gates, Leigh Huber, Gwen Wilkie

TENOR

Benjamin Berman, Michael Martin

BASS

Les Anders, John Miles, Erik Potteiger

West Jersey Chamber Orchestra

OBOE

Geoffrey Deemer, Jocelyn Moore, Evan Ocheret

ENGLISH HORN

Evan Ocheret

BASSOON

Zachary Feingold

TRUMPET

Nozomi Imamura, J.C. Dobrzelewski, William Gregory

TIMPANI

Sean Rode

VIOLIN I

Luigi Mazzocchi, Donna Grantham, Natalie DaSilva

VIOLIN II

Natasha Colkett, Laura Earley, Gared Crawford

VIOLA

Julia DiGaetani, Kathleen Foster

CELLO

Elena Kauffman

BASS

Anne Peterson

KEYBOARD CONTINUO

Vikram Joshi, Harpsichord Kathy Gunsallus, Organ



SirSpeedy

**SIGNS • PRINT • MARKETING
PENNSAUKEN, NJ**

*Is proud to design and print the marketing materials
for West Jersey Chamber Music Society.*



CALL FOR ALL YOUR DESIGN AND PRINTING NEEDS.

(856) 488-1480

sirspeedy.com/pennsauken • fran@sirspeedypenn.com

SJMAG

M E D I A

**proudly supports
the West Jersey
Chamber Music Society.**

sjmagmedia.com



Proud supporter of the West Jersey Chamber Music Society

Local Attorneys. National Resources.

Smart. Innovative. Dedicated. You can expect custom legal solutions from attorneys with deep Garden State connections.

We're right here where you need us, backed by talented colleagues in 70 practice areas and 30 offices coast-to-coast.

New Jersey knowledge. National strength.

The Fox Rothschild Advantage.

Elizabeth G. Litten

Partner, Chief Privacy and HIPAA Compliance Officer

elitten@foxrothschild.com

609.895.3320

CA | CO | DC | DE | FL | GA | IL | MA | MN | MO
NJ | NV | NY | NC | OK | PA | SC | TX | WA

Attorney Advertising

**Fox
Rothschild**

Did you know there is a

200 YEAR OLD PEACH ORCHARD BEING RESTORED IN MOORESTOWN?

Just come and see.

*Folks farm proudly supports
The West Jersey Chamber Music Society*



FOLKS FARM
& MARKET

926 North Lenola Road
Moorestown NJ, 08057

OPEN SEASONALLY JUNE-OCTOBER



Wishing the West Jersey Chamber Music Society a Wonderful Season!



from your friends at
Georgetti's
Market & Catering

We've been serving up authentic Italian cuisine
with the Georgetti family touch since 1978!

From a casual affair at home, to your most lavish events,
Georgetti's offers take-out and catering options for every
occasion. Stop by the shop or call us today!

856-829-5992 • @georgettismarket  

1095 Cinnaminson Avenue, Cinnaminson, NJ 08077

Open Monday-Friday 9:00-7:00 and Saturday 9:30-6:00

To view our menus online, visit WWW.GEORGETTIS.COM



West Jersey Chamber Music Society

Gratefully Thanks Our Supporters!

Angels (\$5,000 and above)

Dr. Lucy B. Rorke-Adams
Cecilia Lane

Benefactors (\$1,000-\$4,999)

Atlantic Trailer
Carol Benner
Harry & Shirley Dozor Foundation
Holman
Amit R.T. Joshi
William & Mary Mueller
William & Joyce Shelden
Whitesell

Patrons (\$260-\$999)

ASL Transportation Group
Frederick & Carolyn Astmann
Brett Couvillion & Elizabeth Litten
Dunhill Travel Deals & Luxury Link
Georgetti's Market
Hank & Pat Heidler
Lynn Paglee
Charles Plymale
Betty Preston
Harris & Melody Ransom
Todd J. Rosenblatt
Mark & Cindi Schneider
Stradley Ronon
Zook Dinon PA

Contributors (\$100-\$259)

Aardvark Guttering, LLC
Fred & Carolyn Astmann
Bayada Home Health Care
Bowman & Company
Sally Corbin
Martha Eshelman

Folks Farm
Fox Rothschild
Thomas Gilman
Frank Herron
Mark Huddell
Robert & Peggy Morris
Joyce Peacock
Robert Plant
PMH Associates, Inc.
Michael & Ann Ramage
Sera Health
Scafario Family
Vickie Sewell
Sir Speedy
SJ Mag Media
Stephen's Exterminating
Carl Winter

Supporters

John Celani
Frank & Donna Grasso
Richard & Lissa Herman
Margie Kanther



**WEST JERSEY CHAMBER MUSIC SOCIETY
NOW ACCEPTS ZELLE®**

Making Payments Easier for You! You can now pay for your concert tickets, donations, and more using Zelle® directly from your desktop or mobile bank app.

It's Fast, Easy, and Secure. Simply send your payments to: **info@wjcms.org**

*Thank you for supporting WJCMS.
We appreciate your continued patronage!*



“Haven’t I commanded you: be strong and courageous? Do not be afraid or discouraged, for the Lord your God is with you wherever you go.” – Joshua 1:9



Mechanical & Electrical/Engineering & Design

1217B North Church Street.
Moorestown, New Jersey 08057
(856)273-0554 Fax (856)273-7701
e-mail: pmh@pmh-associates.com



Whitesell

Proudly supporting the West Jersey Chamber Music Society

Thank you for your dedication to bringing sensational
and affordable classical music to the area.

856-764-2600 | www.whitesellco.com

Industrial & Office Real Estate

*Proudly Serving Southern
New Jersey for Over 65 Years*





EST. 1949

107 Flyatt Road
Vincetown, NJ 08088
(609) 268-1350

**AFTER SILENCE, THAT WHICH COMES
NEAREST TO EXPRESSING THE
INEXPRESSIBLE IS MUSIC**

Aldous Huxley

Congratulations to the
West Jersey Chamber Music Society on over 40
years of enriching our lives and community
through music.



EFFECTIVE, AFFORDABLE TOOLS FOR IT CAPACITY MANAGEMENT

Applied Performance Technologies, Inc.

www.PerfTechPro.com

855-737-3832

The Scafario Family

Proudly Supports the West Jersey
Chamber Music Society





What's "buggin" you?

856-983-7707

Cell: 856-296-1831

Stephen R. Scian, Sr.

E **STEPHEN'S EXTERMINATING, LLC**

stephen@stephensexterminatingllc.com

6 N Maple Ave - Marlton, NJ 08053

430 Commerce Lane, Suite D1 - West Berlin, NJ 08091

*Thank
You*

*For your
continued
support!*

*We look forward to
seeing you in the Fall!*



Todd J. Rosenblatt, CFP®, CPA, MST
WEALTH ADVISOR



960 Holmdel Road, Bld2, Floor 1
Holmdel, NJ 07733
732-837-9067

todd.rosenblatt@archwaywealth.com

Todd J. Rosenblatt, CFP®, CPA, MST, is a Wealth Advisor at Archway Wealth Management. Todd is a CERTIFIED FINANCIAL PLANNERTM professional, holds a CPA with the state of New Jersey, and has an extensive background in tax consulting and financial planning for individuals and small business owners.

Todd brings to Archway his experience as a comprehensive financial planner and 15 years prior experience in public accounting. Todd began his financial planning practice at New England Securities in 2007, an affiliate of MetLife Premier Client Group of New Jersey, and joined Archway in May 2016.

Todd earned a Bachelor of Science degree in Accounting from Syracuse University and a Masters of Science in Taxation from Seton Hall University.

MANAGING YOUR ASSETS

Our portfolios are customized and tailored to pursue your financial objectives. The investment holdings are owned directly by the client and assets are custodied at LPL, an independent broker-dealer. We manage portfolios on a fee only basis, enabling us to maintain independence when allocating our client's investment assets. We work at studying, researching and analyzing the financial markets.

Securities offered through LPL Financial. Member FINRA/SIPC. Investment advice offered through Private Portfolio Partners, a registered investment advisor. Private Portfolio Partners and Archway Wealth Management are separate entities from LPL Financial.




WEST JERSEY
CHAMBER MUSIC SOCIETY

*You
Inspire Us!*

We are proud to share with you
a commitment to delivering
high quality and excellence
to our community.

Congratulations on 40+ years
of beautiful music!





STRADLEY RONON PROUDLY SUPPORTS **WEST JERSEY CHAMBER MUSIC SOCIETY**

For more than 90 years, Stradley Ronon has helped private and public companies – from small businesses to Fortune 500 corporations – achieve their goals. While we're proud of our many client achievements, we're just as dedicated to the communities in which we work and live. Through our financial contributions and volunteer efforts, we're pleased to support hundreds of nonprofit and charitable organizations.

www.stradley.com

Pennsylvania | New Jersey | Washington, DC | New York | Illinois | Delaware


STRADLEY
 **RONON**



Holman

Holman and our employees
gratefully support the West Jersey
Chamber Music Society.

HOLMAN.COM

 Driving What's Right